

**ACP5 Antibody (N-term)**  
**Affinity Purified Rabbit Polyclonal Antibody (Pab)**  
**Catalog # AP20031a****Specification**

---

**ACP5 Antibody (N-term) - Product Information**

Application	WB,E
Primary Accession	<a href="#">P13686</a>
Other Accession	<a href="#">NP_001602.1</a>
Reactivity	Human
Host	Rabbit
Clonality	Polyclonal
Isotype	Rabbit IgG
Calculated MW	36599
Antigen Region	75-101

**ACP5 Antibody (N-term) - Additional Information****Gene ID** 54**Other Names**

Tartrate-resistant acid phosphatase type 5, TR-AP, Tartrate-resistant acid ATPase, TrATPase, Type 5 acid phosphatase, ACP5

**Target/Specificity**

This ACP5 antibody is generated from rabbits immunized with a KLH conjugated synthetic peptide between 75-101 amino acids from the N-terminal region of human ACP5.

**Dilution**

WB~~1:1000

E~~Use at an assay dependent concentration.

**Format**

Purified polyclonal antibody supplied in PBS with 0.09% (W/V) sodium azide. This antibody is purified through a protein A column, followed by peptide affinity purification.

**Storage**

Maintain refrigerated at 2-8°C for up to 2 weeks. For long term storage store at -20°C in small aliquots to prevent freeze-thaw cycles.

**Precautions**

ACP5 Antibody (N-term) is for research use only and not for use in diagnostic or therapeutic procedures.

**ACP5 Antibody (N-term) - Protein Information****Name** ACP5

**Function** Involved in osteopontin/bone sialoprotein dephosphorylation. Its expression seems to increase in certain pathological states such as Gaucher and Hodgkin diseases, the hairy cell, the B-cell, and the T- cell leukemias.

**Cellular Location**

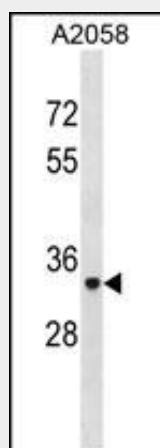
Lysosome.

**ACP5 Antibody (N-term) - Protocols**

Provided below are standard protocols that you may find useful for product applications.

- [Western Blot](#)
- [Blocking Peptides](#)
- [Dot Blot](#)
- [Immunohistochemistry](#)
- [Immunofluorescence](#)
- [Immunoprecipitation](#)
- [Flow Cytometry](#)
- [Cell Culture](#)

**ACP5 Antibody (N-term) - Images**



ACP5 Antibody (N-term) (Cat. #AP20031a) western blot analysis in A2058 cell line lysates (35ug/lane). This demonstrates the ACP5 antibody detected the ACP5 protein (arrow).

**ACP5 Antibody (N-term) - Background**

This gene encodes an iron containing glycoprotein which catalyzes the conversion of orthophosphoric monoester to alcohol and orthophosphate. It is the most basic of the acid phosphatases and is the only form not inhibited by L(+)-tartrate. [provided by RefSeq].

**ACP5 Antibody (N-term) - References**

Shih, K.C., et al. Metab. Clin. Exp. 59(1):144-151(2010)  
Wu, Y.Y., et al. BMC Cancer 10, 158 (2010) :  
Baranzini, S.E., et al. Hum. Mol. Genet. 18(4):767-778(2009)  
Qin, Y.J., et al. Acta Pharmacol. Sin. 29(12):1493-1498(2008)  
de Souza Malaspina, T.S., et al. J. Mol. Histol. 39(6):627-634(2008)